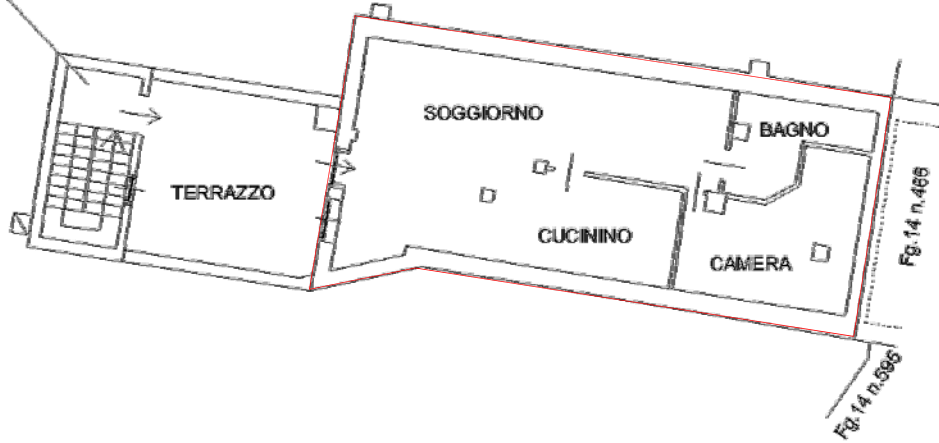


**PIANO TERZO-SOTTOTETTO 92.00 mq** terrazzo 26.00mq  
Hm = mt 2.00

B.c.n.c.  
Fig.14 n.313 sub.7



**PIANO SECONDO 119.00 mq** balconi 15.00mq  
H = mt 2.65

B.c.n.c.  
Fig.14 n.313 sub.7

